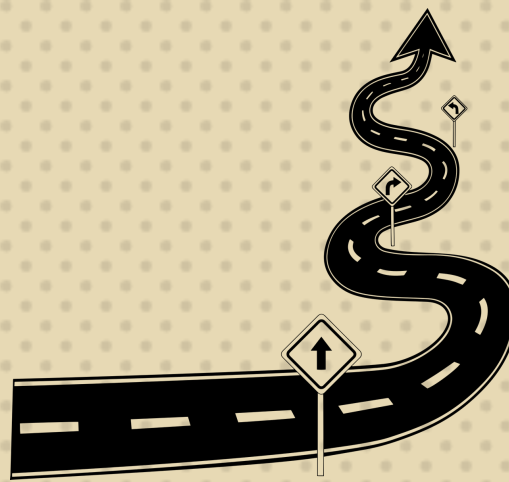


## Why Work

Work is an exciting way to use your skills, be active and seen in your community, and earn money. Here are some things to know and think about as you begin your path to employment.



# Supporting Your Employment Journey

## Key Ideas

### Competitive Integrated Employment (CIE)

- Full-time or part-time work in the community
- Coworkers without disabilities
- Pay (at least minimum wage) and other benefits
- Could also mean choosing to start your own business

### Employment First

- People with developmental disabilities who want to work in CIE should be supported no matter how challenging their disabilities are.

## Explore Available Tools

### Supported Employment Program

- Paid integrated work
- Supports include: job coach, job development, transportation training, and specialized job training

### Paid Internship Program

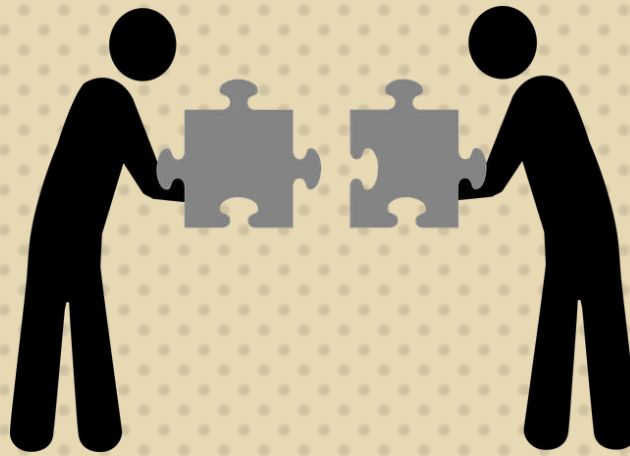
- Gain experience by working at a job you are interested in
- Internships up to 1,040 hours per year
- Pays at or above minimum wage

### CIE Incentive Program

- Promotes full or part-time work at or above minimum wage
- Increase sustained CIE placements
- Provide Incentive payments to service providers for CIE placements

## When Setting Employment Goals, Think About

- Your interests
- Your strengths
- Job skills you have or want to work on
- The kind of workplace that would be best for you
- Support you need to help you



## Education

- Transition conversation to begin at age 14
- Provide job readiness skills and on-the-job training
- Help you look and apply for jobs

## Friends and Family

- Assist with choosing an employment goal
- Help you meet people who are hiring

## Community Resources

- Work Incentives Planning and Assistance- explain how work may change your benefits
- American Job Center- help look for jobs and provide needed training
- College to Career program- help students with disabilities obtain employment

## Regional Centers

- Service Coordinator to help you plan and find support for your employment goals
- Employment Specialist to work with community partners

May pay for services, including:

- Supported Employment Services
- Paid Internship Program
- CIE Incentive Program

# Find Support

## Department of Rehabilitation (DOR)

- Help people with disabilities find and keep CIE
- Provides job skills training
- Can support self-employment

## More information and resources are available here

<https://www.cal-collab.net/public-webinars/>



# ARCA